

BEENA CLOVER

MONTHLY CONSTRUCTION UPDATES – APRIL-26



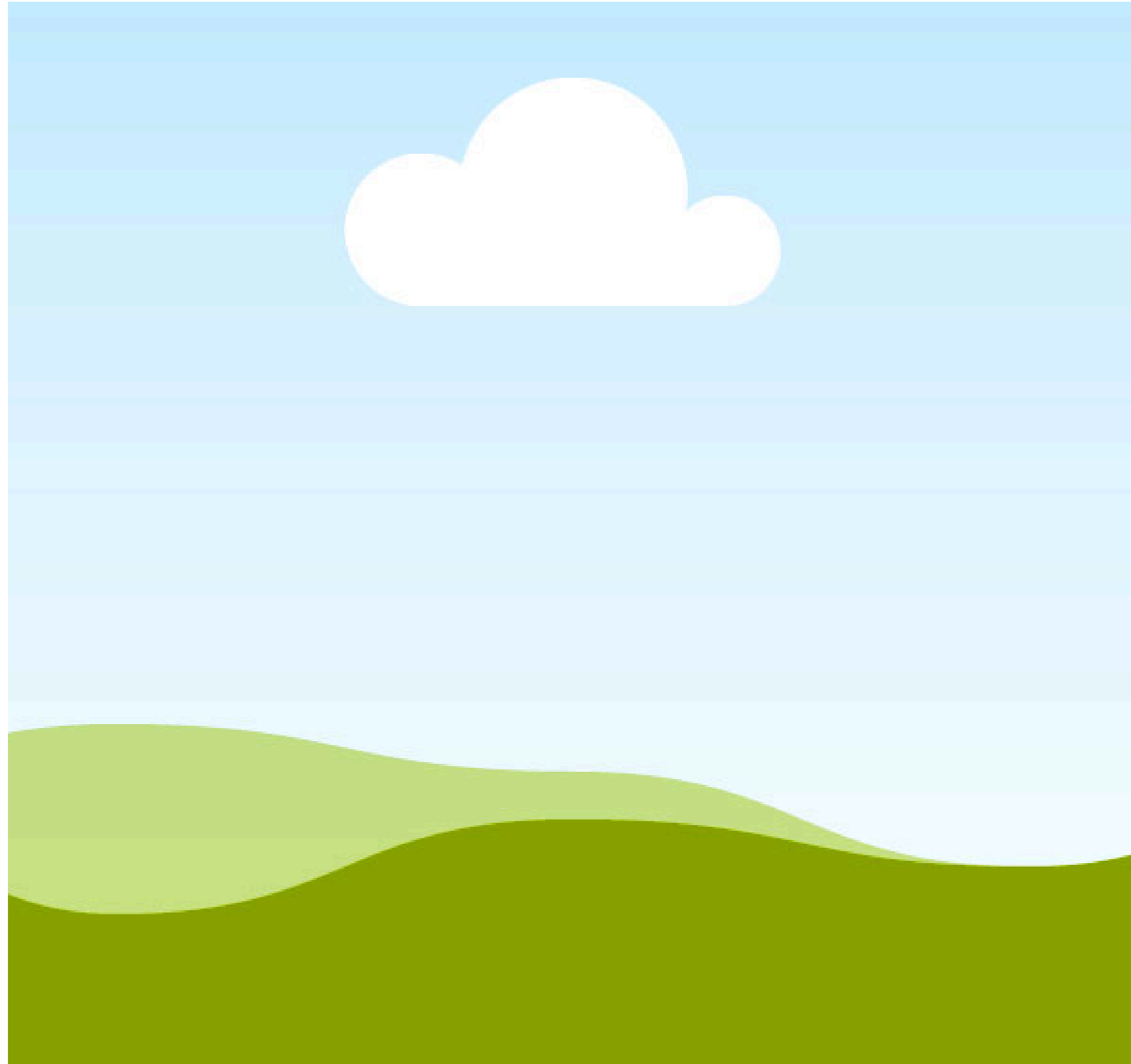
Content

- Master Plan
- Structure –Progress Status & Photos
 - Shell & Core
 - Block Work
 - Plastering
- Finishing –Progress Status & Photos
 - Toilet Waterproofing
 - Tile Laying
 - Painting
 - MEP Work
 - Upvc Windows
 - Joinery
- External Development

MASTER PLAN



STRUCTURE –PROGRESS STATUS & PHOTOS





Block-01 – Elevation View



Block-01 – Pour-2 – Third Floor Lintel Work in Progress



Block-01 – Pour-2 – Fourth Floor Block Work in Progress



Block-01 – Pour-2 – Second Floor Plastering Work In Progress



Block-01 – Pour-1 – Fifth Floor Plastering work Completed



Block-01 – Pour-1 – Fourth & Fifth Floor Waterproofing work in Progress



Block-01 – Pour-1 – East Side External Texture Work In Progress



Block-01 – Pour-1 External Plastering Work In Progress



Block-02 – Elevation View



Block-02 – Pour-1 – Fourth Floor Suspended waterline Work Completed.



Block-02 – Pour-2 – Fifth Floor Electrical work in progress



Block-02 – Pour-2 – Third Floor Plastering Work Completed



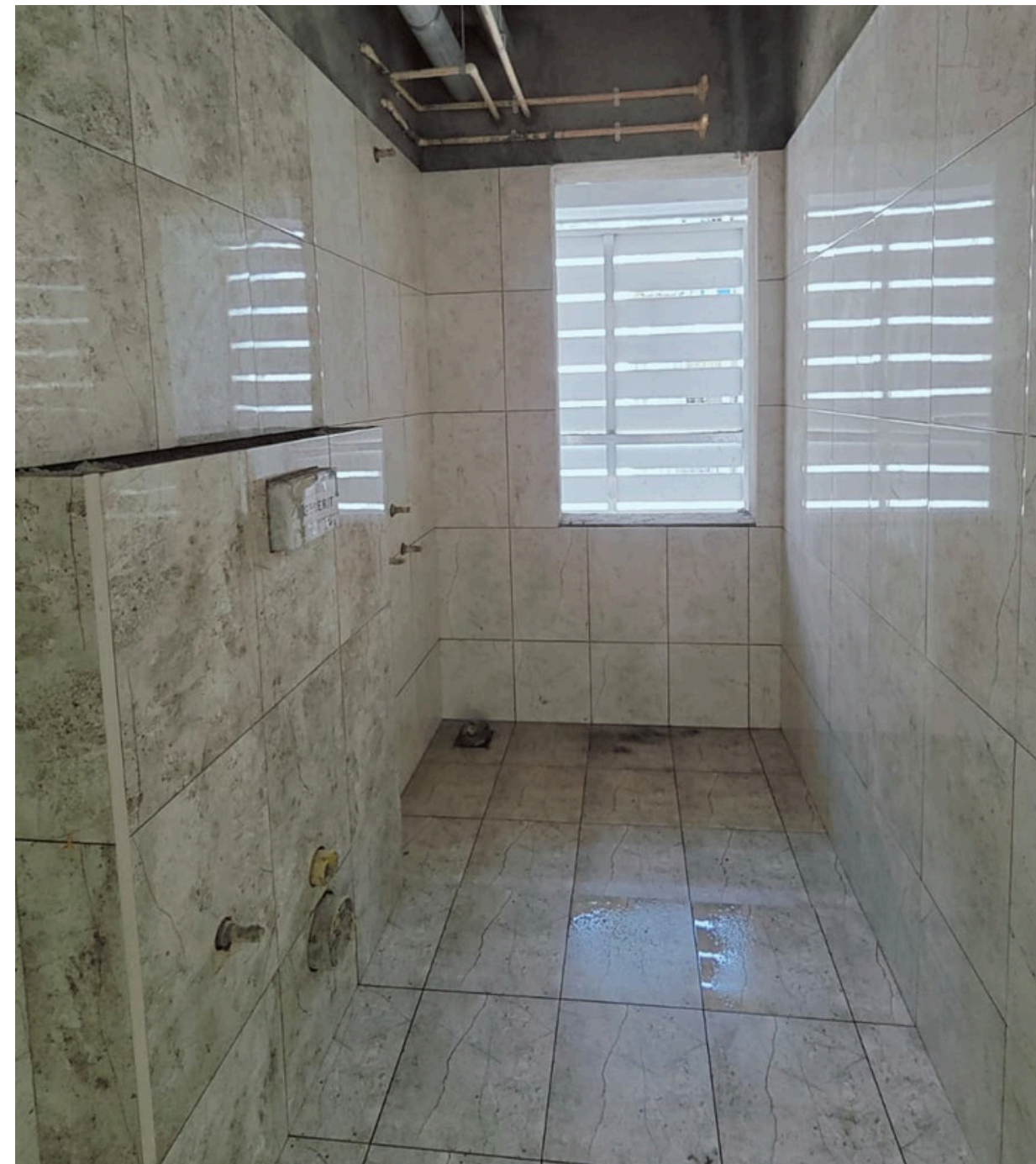
Block-03 – Elevation View



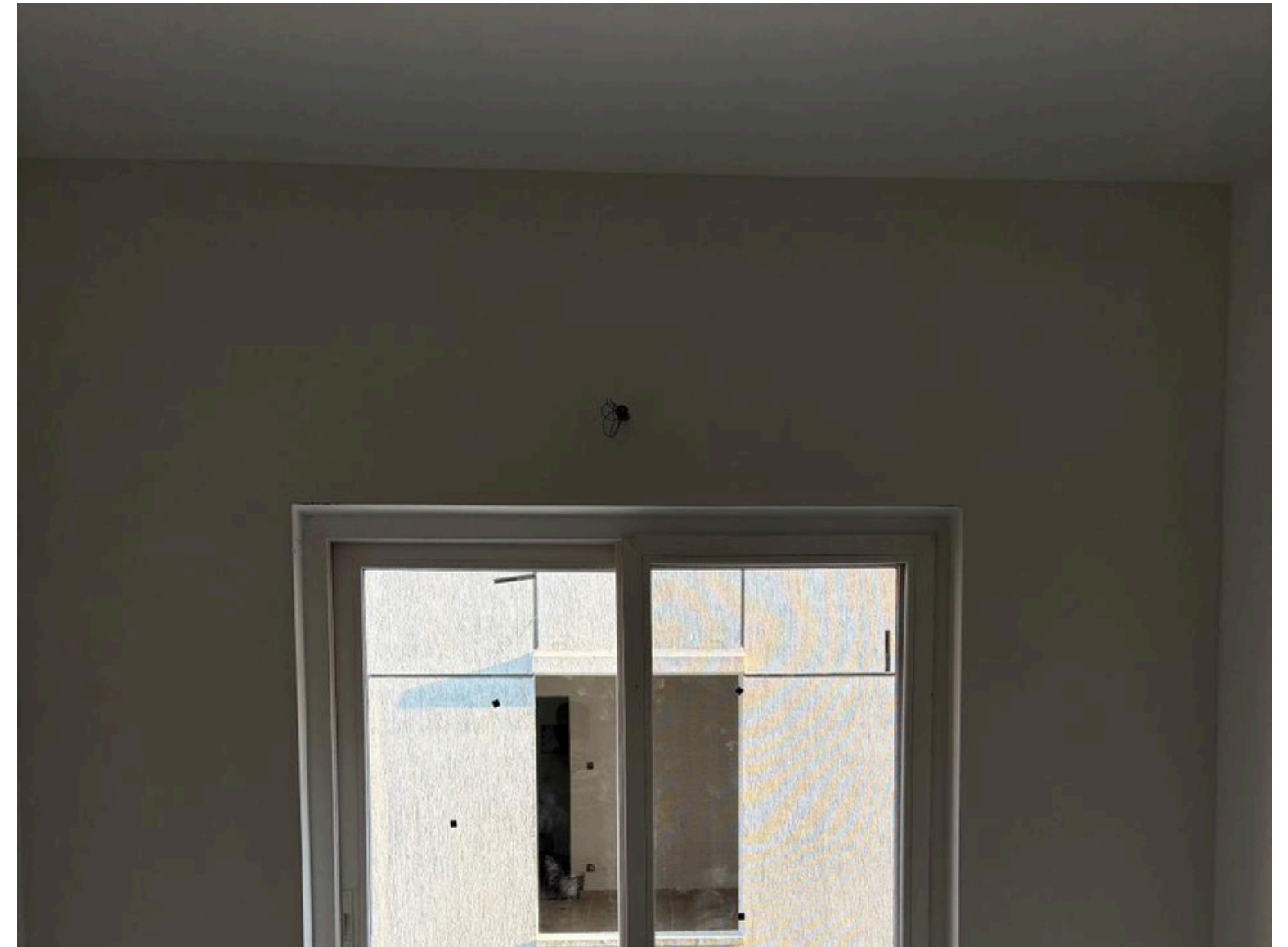
Block-03 – First Floor 2nd Coat Putty & Sanding work in progress



Block-03 –Floor Tile Laying Work Completed



Block-03 –Toilet Tile Laying Work Completed



Block-03 – Second Floor UPVC Window Frame work in Progress



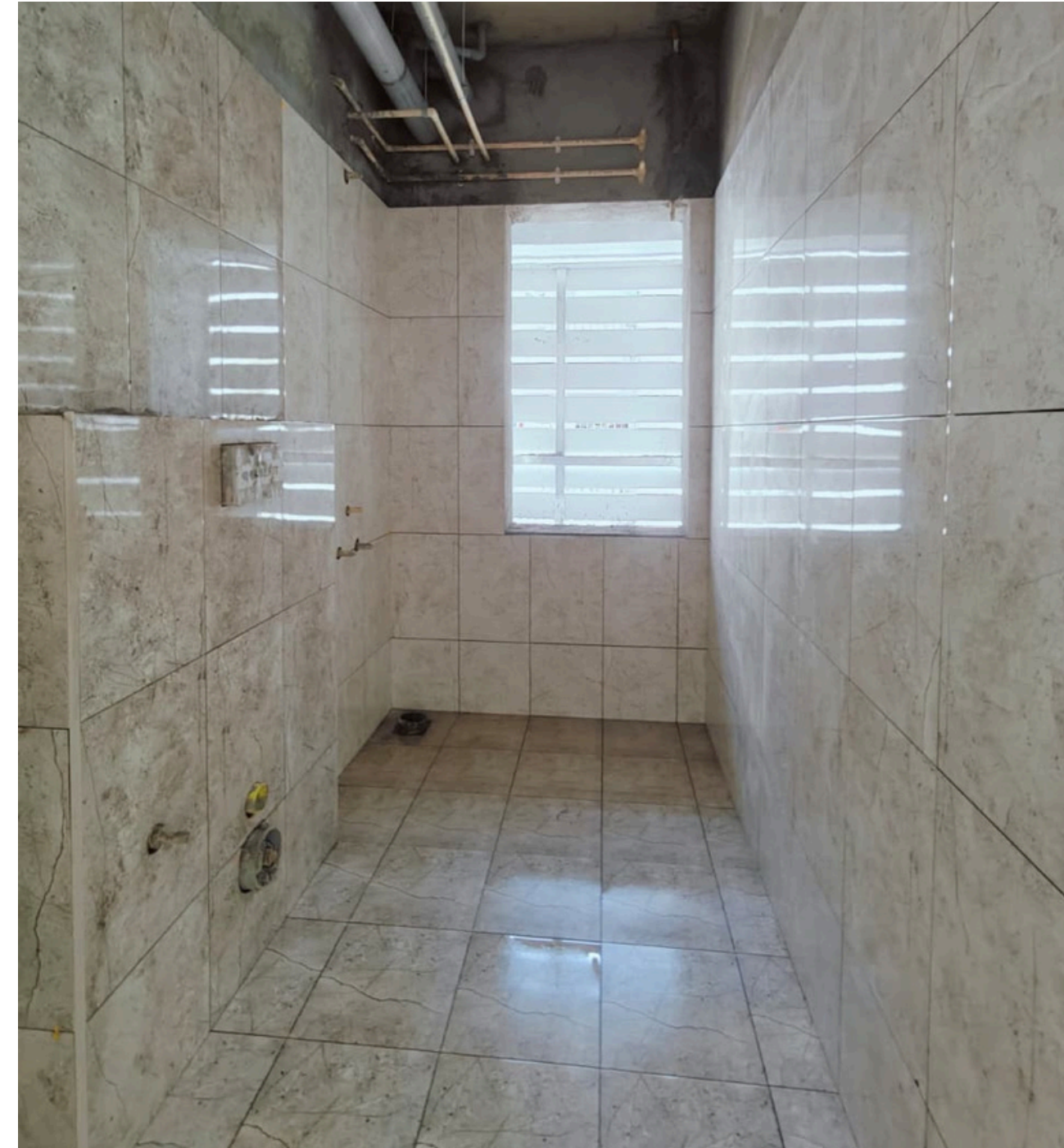
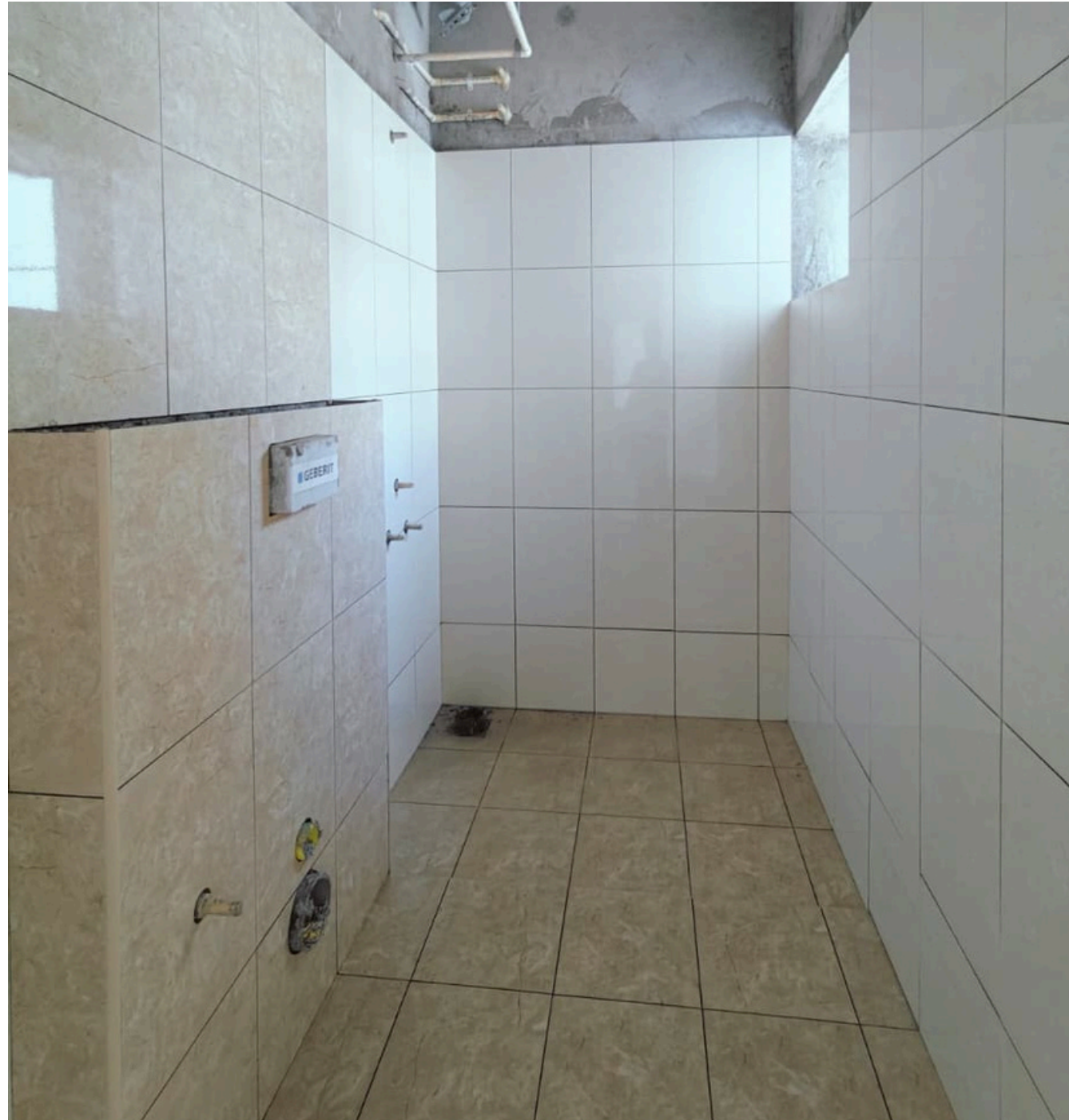
Block-03 –External 1st coat Painting work Completed



Block-04 – Elevation View



Block-04 – Up to Third Floor Main Flooring Work Completed



Block-04 – Up to Third Floor Toilet Work Completed



Block-04 –1st Coat Putty Work Completed



Block-04 – Terrace Floor Coating & Brick Coba work in Progress

Thank
you!