



# **SKYLANTIS**

## **CONSTRUCTION UPDATE PHOTOS NOVEMBER 2024**

## STAGE COMPLETION STATUS UP TO NOVEMBER-24

S. No	Description	Block 1	Block 2	% of Completion ( Block 1&2)	Remarks
1	Completion of Foundation	Completed	Completed	100%	
2	Commencement of Stilt Floor Roof	Completed	Completed	100%	
3	Commencement of First Floor Roof	Completed	Completed	100%	
4	Commencement of Third Floor Roof	Completed	Completed	100%	
5	Commencement of Fifth Floor Roof	Completed	Completed	100%	
6	Commencement of Seventh Floor Roof	Completed		50%	
7	Commencement of Nineth Floor Roof	Completed		50%	
8	Commencement of Eleventh Floor Roof	Work In Progress			
09	Commencement of Thirteenth Floor Roof				
10	Commencement of Masonry Work	Up to 7 <sup>th</sup> Floor Completed	Up to 2 <sup>nd</sup> Floor Completed	35%	
11	Commencement of Internal Plastering	Up to 4 <sup>th</sup> Floor Completed		10%	
112	Commencement of Internal Finishes				



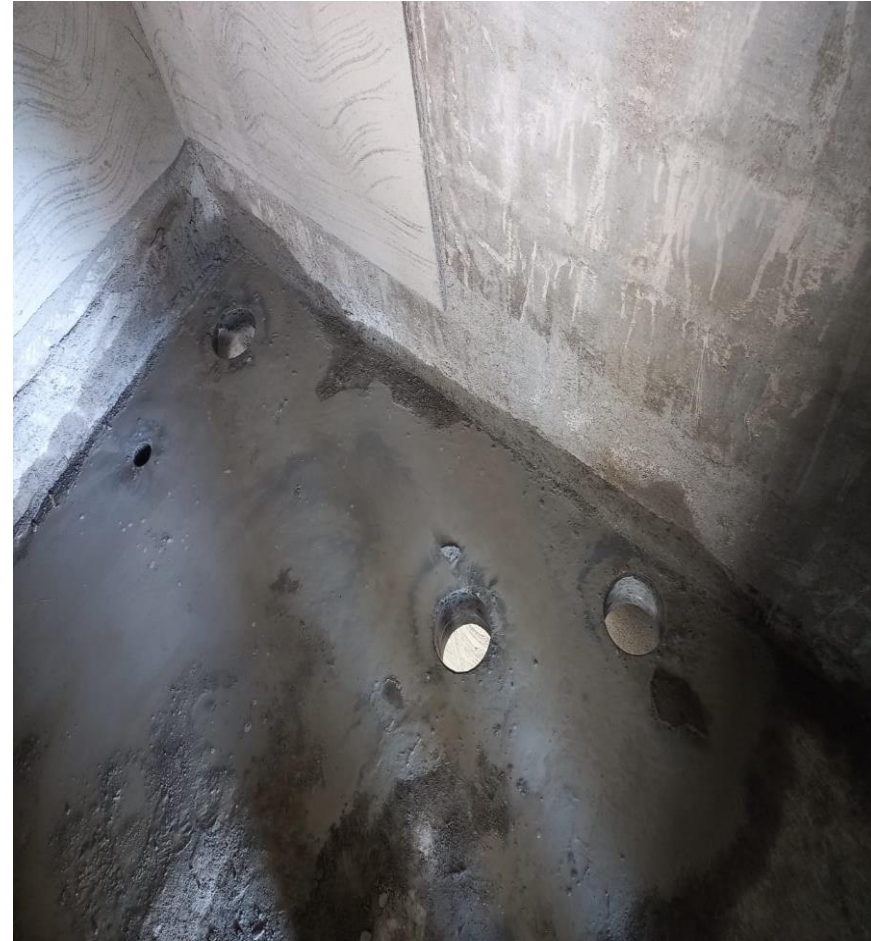
**BLOCK 1 – ELEVENTH FLOOR COLUMN REINFORCEMENT  
WORKS IN PROGRESS.**



**BLOCK 1 – TENTH FLOOR ROOF SLAB CONCRETE WORKS  
COMPLETED.**



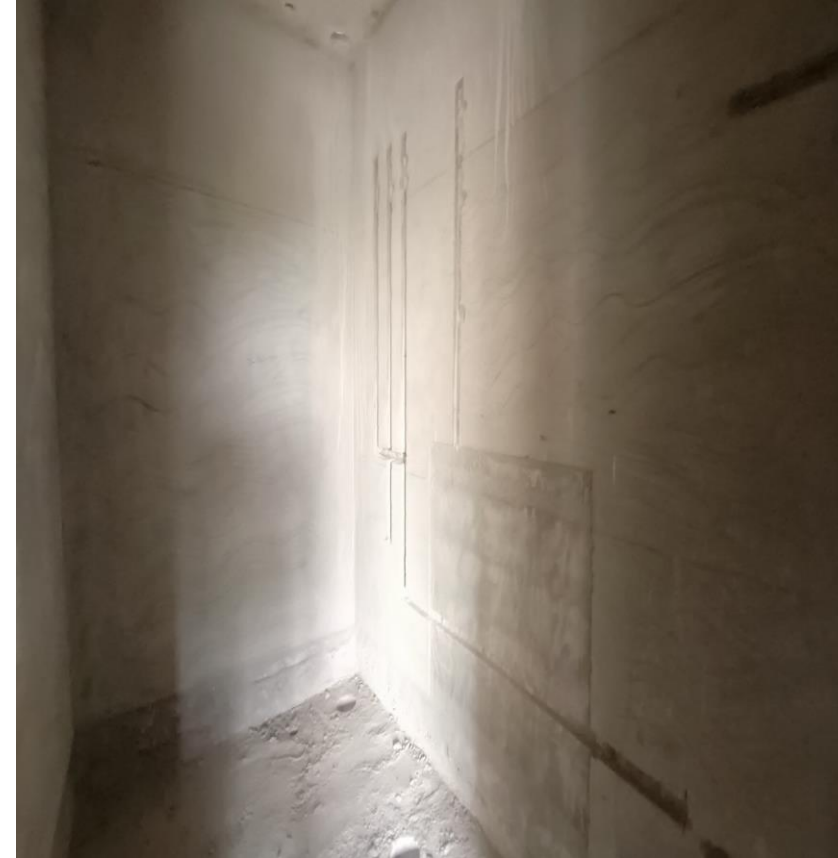
**BLOCK 1 – TENTH FLOOR COLUMN CONCRETE WORKS COMPLETED.**



**BLOCK 1 – FIRST FLOOR PLUMBING CHASING WORKS &  
CORE CUTTING COMPLETED.**



**BLOCK 1 – FIRST FLOOR WATERPROOFING WORKS IN PROGRESS.**



**BLOCK 1 – SECOND FLOOR PLUMBING & CORE CUTTING  
WORKS COMPLETED.**



**BLOCK 1 – FOURTH FLOOR INTERNAL PLASTERING WORKS  
COMPLETED.**



**BLOCK 1 – FIFTH FLOOR INTERNAL PLASTERING WORKS  
IN PROGRESS.**



**BLOCK 1 – SIXTH FLOOR BLOCKWORK WORKS  
COMPLETED.**



**BLOCK 1 – SIXTH FLOOR ELECTRICAL WORKS IN  
PROGRESS.**



**BLOCK 1 – SEVENTH FLOOR BLOCKWORK (ABOVE LINTEL) WORKS IN PROGRESS.**



**BLOCK1 – EIGHTH FLOOR BLOCKWORK (LINTEL LEVEL )  
& LINTEL WORKS IN PROGRESS.**



**BLOCK 1 – NORTH SIDE ELEVATION.**



**BLOCK 1 – SOUTH SIDE ELEVATION.**



**BLOCK 2 POUR 1 FIFTH FLOOR ROOF SLAB CONCRETE  
COMPLETED.**



**BLOCK 2 POUR 1 SECOND FLOOR BLOCKWORK  
COMPLETED.**



**BLOCK 2 POUR 1 THIRD FLOOR BLOCKWORK (LINTEL LEVEL) & LINTEL WORKS IN PROGRESS.**



**BLOCK 2 POUR 1 FOURTH FLOOR BLOCKWORK (SILL LEVEL) IN PROGRESS.**



**BLOCK 2 POUR 1– WEST SIDE ELEVATION.**



**BLOCK 2 POUR 1 – EAST SIDE ELEVATION.**



**UG SUMP PCC COMPLETED & PILE CHIPPING WORKS IN  
PROGRESS**

*Thank  
you!*